

The unique style of the Elegance screen comes with two types of tensioning. The CTS (Constant Tensio System) is equipped with two counterweights, hooked onto hinges placed at the ends of the screen base: these tension rigid cables threaded through the lateral eyelets, guaranteeing constant self-tensioning and a smooth, crease-free rolling, owing to the fact that the eyelets are positioned outside the screen's surface. The ideal solution for those who put technical performance first. But since aesthetics are important, there is also the classic system, in which the cables are elastic. Threaded through the eyelets, they create a lateral curve of the surface, which is useful to prevent the formation of creases, despite the presence of the eyelet. In both cases the additional elements maintain the harmonious lines of the lateral sides and of the abutting base. Providing customized aesthetics and optimal planarity in one product.

Available with 50 or 70 mm lateral black borders.

See page  
for Technical data



Elegance Tensio CTS ▲



Elegance Tensio Classic ▲

CTS Tensioning system detail ▼



Elegance lateral end detail ▲

### Create your own screen with the PSS

- > **Personalized dimensions:** width and height
- > **Motor type:** standard motor or radio integrated motor (optional)
- > **Case:** with standard or quick-installation case
- > **Case color:** Standard in White Matte. Optional in Black Matte. Custom color for an extra cost
- > **Standard Drop:** from 5 to 45 cm
- > **Projection surface fall:** back (standard), front or reverse-roll (optional)
- > **Side of command/motor:** right (standard) or left (optional)

### Projection Surfaces (see page 6)

- > VisionWhite / VisionWhitePro
- > AmbientGrey
- > ReferenceWhite / ReferenceGrey
- > VisionAcoustik
- > VisionRear DB and VisionRear, only without black borders

### Standard Accessories

- > Kit with wall or ceiling mount brackets
- > Unipolar switch
- > Remote control (only for radio integrated version)

### Optional Accessories

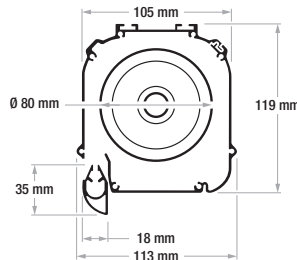
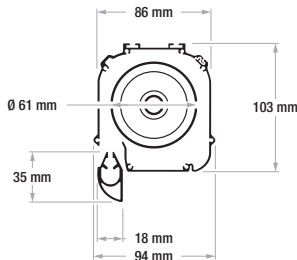
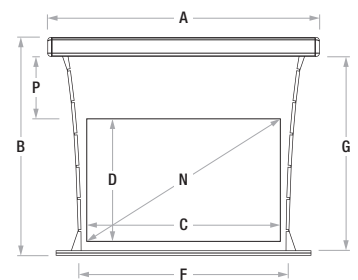
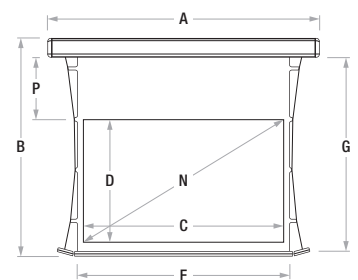
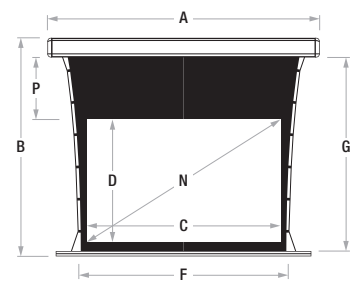
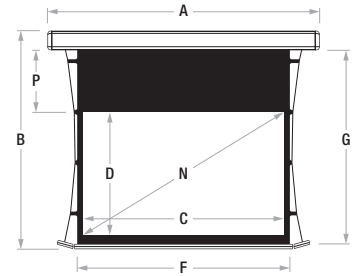
- > Interface to drive the screen in radio frequency with remote control (not included), 12V trigger, unipolar switch, dry contact or RS232
- > Receiver and infrared remote control
- > Extension brackets for screens up to 60 cm
- > Screen lift

### PSS Formats

1:1	1.33:1	1.60:1	1.78:1	2.35:1	2.37:1	2.40:1
	4:3	16:10	16:9	21:9		

**Elegance** Tensio CTS 50 mm borders / without borders - Tensio Classic 50 mm borders / without border

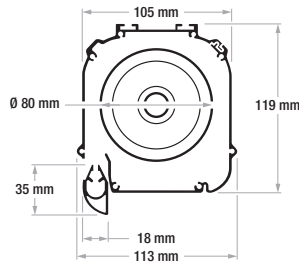
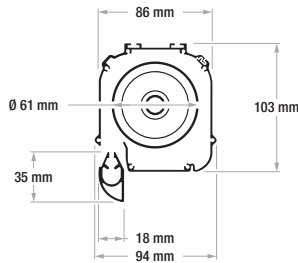
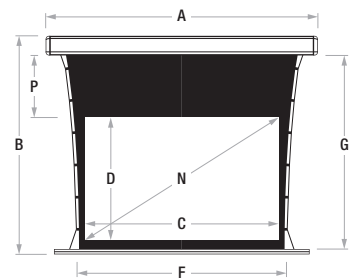
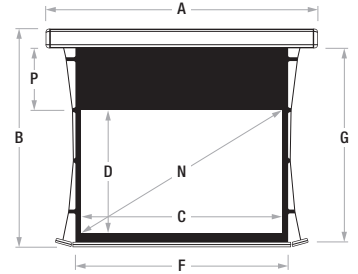
Aspect Ratio	Viewing Width	Viewing Height	Diagonal Inches	Overall Width	Overall Height	Surface Width	Surface Height	Standard Drop	Total Maximum Drop	Packaging Dimensions	Net Weight	Gross Weight
	C	D	N	A	B	F	G	P	mm	mm	kg	kg
<b>1,00</b> (1:1)	2020	2020	<b>112</b>	2500	2274	2120	2120	50	50	2700x150x180	14	17
	2520	2520	<b>140</b>	3000	2824	2620	2670	100	100	3200x150x180	23	26
<b>1,33</b> (4:3)	2020	1519	<b>99</b>	2500	1757	2120	1619	50	450	2700x150x180	15	18
	2520	1895	<b>124</b>	3000	2199	2620	2045	100	450	3200x150x180	25	28
	3020	2271	<b>149</b>	3500	2575	3120	2421	100	450	3700x150x180	28	33
<b>1,78</b> (16:9)	2020	1135	<b>91</b>	2500	1373	2120	1235	50	450	2700x150x180	14	17
	2520	1416	<b>114</b>	3000	1720	2620	1566	100	450	3200x150x180	23	26
	3020	1697	<b>136</b>	3500	2001	3120	1847	100	450	3700x150x180	26	31
<b>1,60</b> (16:10)	2020	1263	<b>94</b>	2500	1501	2120	1363	50	450	2700x150x180	14	17
	2520	1575	<b>117</b>	3000	1879	2620	1725	100	450	3200x150x180	23	26
	3020	1888	<b>140</b>	3500	2192	3120	2038	100	450	3700x150x180	26	31
<b>2,35</b> (21:9)	2020	860	<b>86</b>	2500	1098	2120	960	50	450	2700x150x180	13	16
	2520	1072	<b>108</b>	3000	1376	2620	1222	100	450	3200x150x180	22	25
	3020	1285	<b>129</b>	3500	1589	3120	1435	100	450	3700x150x180	25	30
<b>2,37</b>	2020	852	<b>86</b>	2500	1090	2120	952	50	450	2700x150x180	14	17
	2520	1063	<b>108</b>	3000	1367	2620	1213	100	450	3200x150x180	23	26
	3020	1274	<b>129</b>	3500	1578	3120	1424	100	450	3700x150x180	26	31
<b>2,40</b>	2020	842	<b>86</b>	2500	1080	2120	942	50	450	2700x150x180	13	16
	2520	1050	<b>107</b>	3000	1354	2620	1200	100	450	3200x150x180	22	25
	3020	1258	<b>129</b>	3500	1562	3120	1408	100	450	3700x150x180	25	30



In certain circumstances, due to the surface's height, it is necessary to use a case with the rolling tube of 80 mm.

## Elegance Tensio CTS 70 mm borders - Tensio Classic 70 mm borders

Aspect Ratio	Viewing Width	Viewing Height	Diagonal Inches	Overall Width	Overall Height	Surface Width	Surface Height	Standard Drop	Total Maximum Drop	Packaging Dimensions	Net Weight	Gross Weight
	C	D	N	A	B	F	G	P	mm	mm	kg	kg
1,00 (1:1)	1980	1980	110	2500	2258	2120	2120	70	70	2700x150x180	14	17
	2480	2480	138	3000	2804	2620	2650	100	100	3200x150x180	23	26
	2980	2980	170	3500	3200	2960	3000	130	130	3700x150x180	32	35
1,33 (4:3)	1980	1489	98	2500	1767	2120	1629	70	450	2700x150x180	15	18
	2480	1865	122	3000	2189	2620	2035	100	450	3200x150x180	25	28
	2980	2241	147	3500	2565	3120	2411	100	450	3700x150x180	28	33
1,78 (16:9)	1980	1112	89	2500	1390	2120	1252	70	450	2700x150x180	14	17
	2480	1393	112	3000	1717	2620	1563	100	450	3200x150x180	23	26
	2980	1674	135	3500	1998	3120	1844	100	450	3700x150x180	26	31
1,60 (16:10)	1980	1238	92	2500	1516	2120	1378	70	450	2700x150x180	14	17
	2480	1550	115	3000	1874	2620	1720	100	450	3200x150x180	23	26
	2980	1863	138	3500	2187	3120	2033	100	450	3700x150x180	26	31
2,35 (21:9)	1980	843	85	2500	1121	2120	983	70	450	2700x150x180	13	16
	2480	1055	106	3000	1379	2620	1225	100	450	3200x150x180	22	25
	2980	1268	128	3500	1592	3120	1438	100	450	3700x150x180	25	30
2,37	1980	835	85	2500	1113	2120	975	70	450	2700x150x180	14	17
	2480	1046	106	3000	1370	2620	1216	100	450	3200x150x180	23	26
	2980	1257	127	3500	1581	3120	1427	100	450	3700x150x180	26	31
2,40	1980	825	84	2500	1103	2120	965	70	450	2700x150x180	13	16
	2480	1033	106	3000	1357	2620	1203	100	450	3200x150x180	22	25
	2980	1242	127	3500	1566	3120	1412	100	450	3700x150x180	25	30



In certain circumstances, due to the surface's height, it is necessary to use a case with the rolling tube of 80 mm.



Surface Fireproof Certifications